



10_1"W 1280 x 800 TFT + Pap Touch
KIT FOR UP Board
KIT-101JDHX30BP1U1

Assembly guide

Rev 01
5 May 2016

Digimax s.r.l.

Via dei Laghi, 31
36077 Altavilla Vicentina (VI)
tel. +39 0444 574066 - fax. +39 0444 574600
www.digimax.it - digimax@digimax.it

www.digimax.it

RockTouch &
Futurelabs for

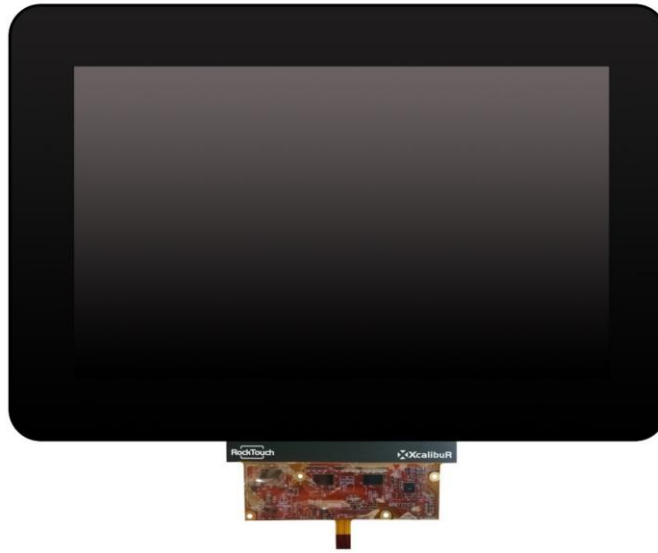


Record of Revision

Version and Date	Page	Old Description	New Description	Remark
0_1 May 05 2016	All	First Edition Specification		

Kit Components

A



B



C



D



E



F



	P/N	Description
A	DSAM-101JDHX30BP1U1	1280x800 TFT lcd with LVDS interface & ROCKTOUCH 10.1"W 3 mm USB Pcap Touch Screen
B	TFC_UP2DSI	FutureLabs DSI-LVDS board
C	CB_UP2USB8	USB Bridge Cable
D	CBL-41-03-100-A	DSI Cable 41 pins
E	/	4 bolts, 4 nuts, 4 screw
F	CB_UP2IPEX101	LVDS Cable for TFT 10.1"W

Package KIT-07X0ETTX30003U1



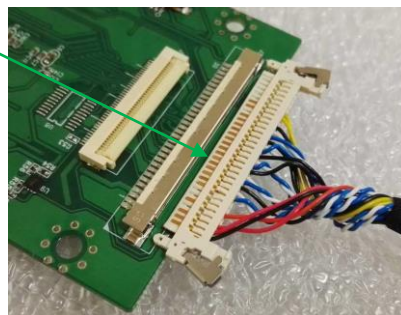
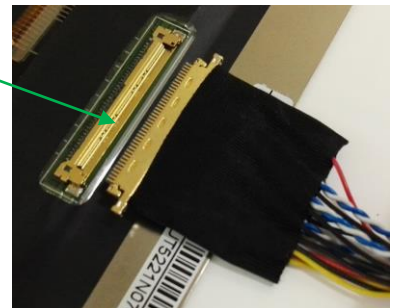
Assembly Procedure



Bring the Display with touch and align from back side with the DSI converter board, open the 4 PINS ZIF connector on the DSI board



After you plug in the 4 pins Touch FPC into the 4 pins ZIF connector, then bring the LVDS Cable and plug in the white connector side on DSI converter board then the Golden side on the Display Connector, make sure the side is correct and is all plug in

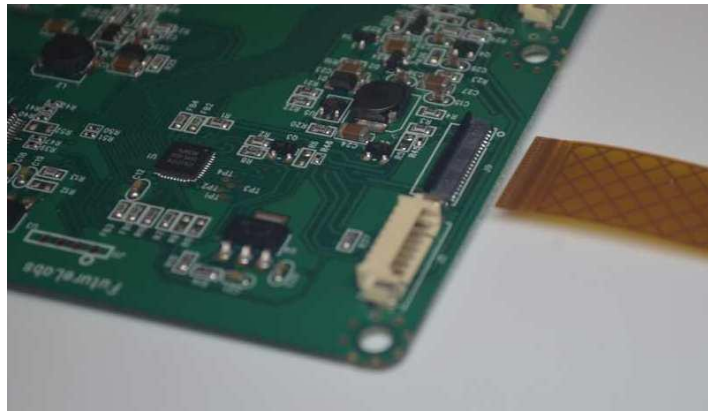


Assembly Procedure

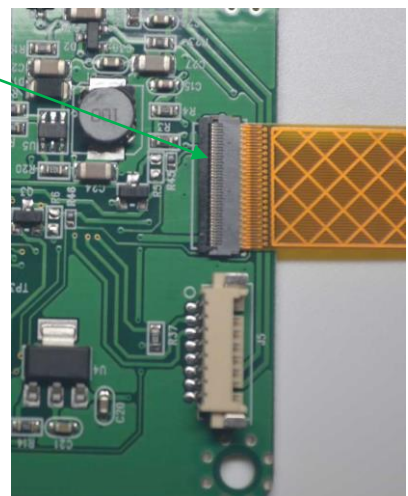


Open the DSI 41 Pin connector from the back side

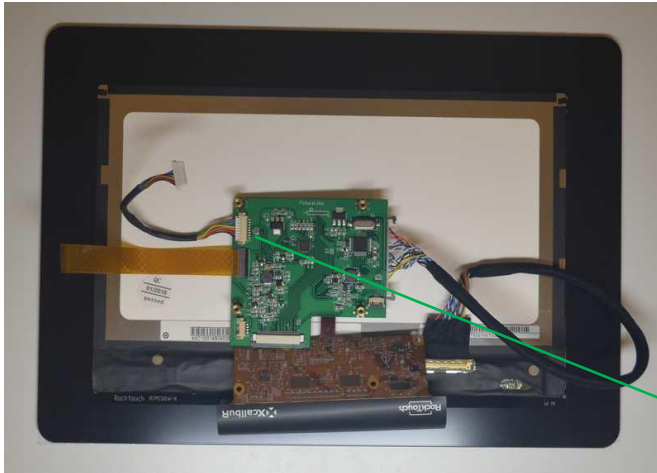
Then plug in the DSI Cable, make sure the contacts are on the TOP side



After you plug in the DSI cable, your solution will look like the following picture

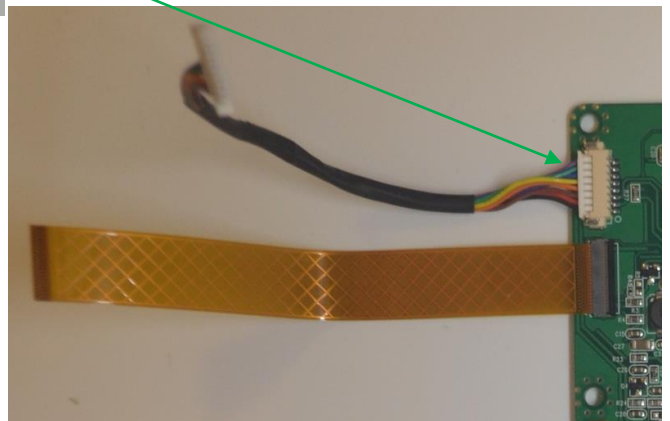


Assembly Procedure



Plug in the USB bridge Cable on the 10 pin side on the DSI board

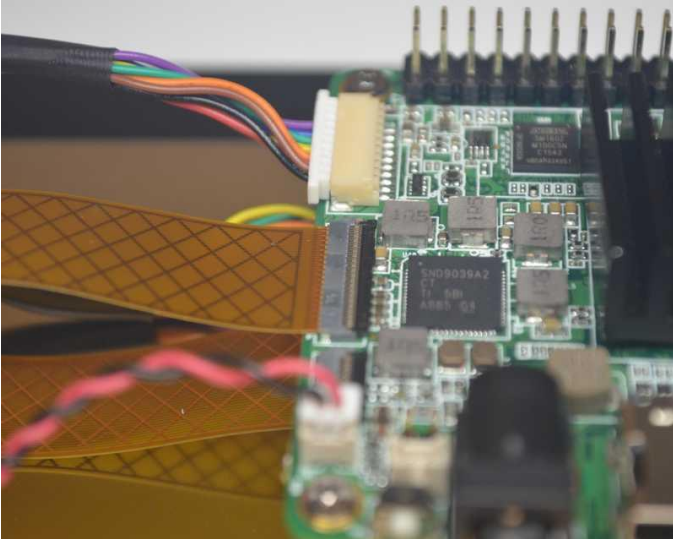
The USB Cable will look like this picture
And then you can fix the 4 spacer with
the 4 nuts



Then plug in on the top the UP board and fix with the remain 4 screws and plug in the DSI and USB Cables

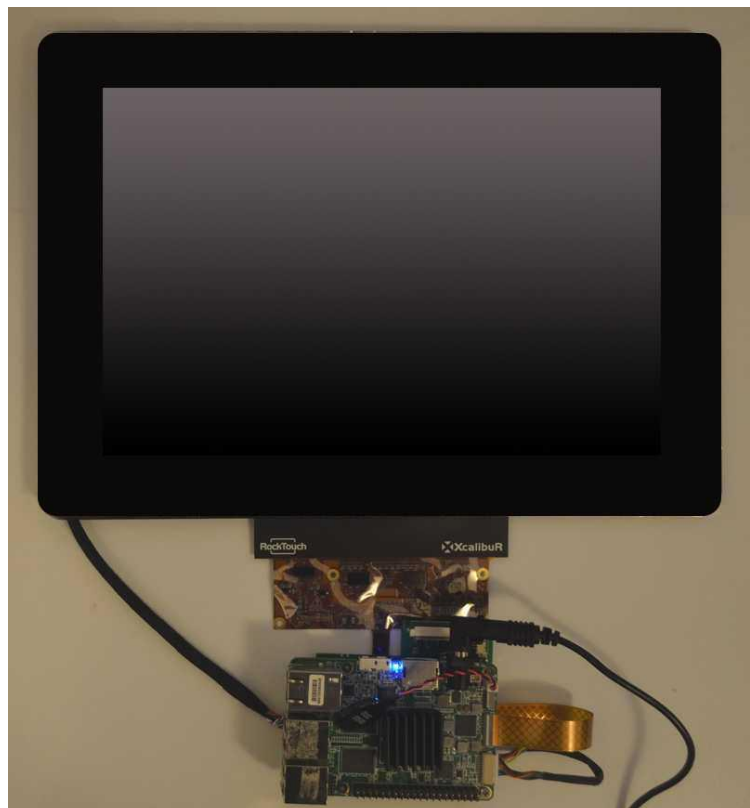


Assembly Procedure



Make sure cables are plug in correctly on the UP board

Put the UP board on the Bottom side
As following image.
Connect the HDMI cable to an External
LCD monitor and Plug in the power
supply on the UP board

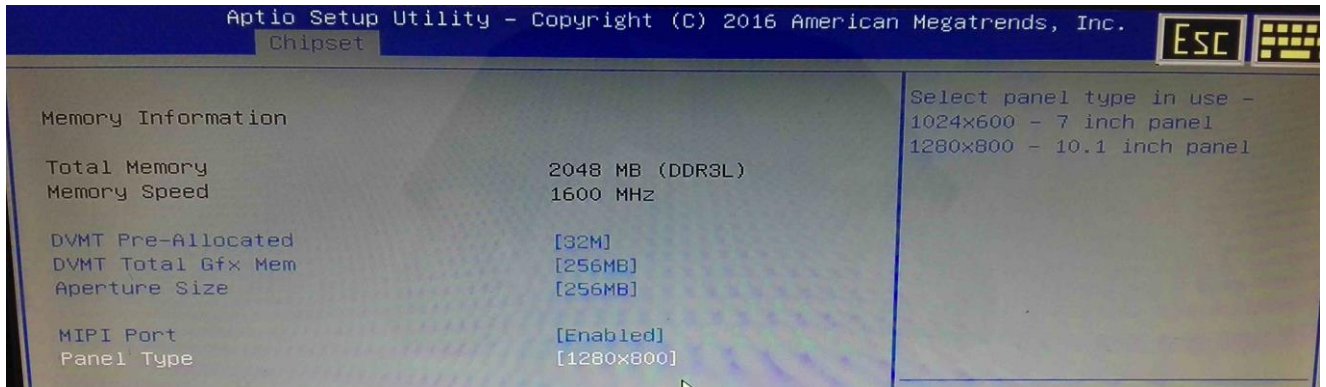


Assembly Procedure

Once the UP logo will show on the Monitor please press DEL and you will enter into the BIOS, once you are into the BIOS go on Chipset menu North bridge and select:

MIPI Port: Enable

Panel Type: 1280x800 for 10_1'W



Select Save Changes and Reset, now you can disconnect the HDMI cable from UP board.



Assembly Procedure

Done! You will see the panel light up and touch will work out of the box.



For the best Touch behavior please connect the LCD metal Frame to the board Ground.